

SPACE CAPSULE SMART CAT LITTER BOX

USER MANUAL



Read the user manual carefully before use and keep it for future reference.

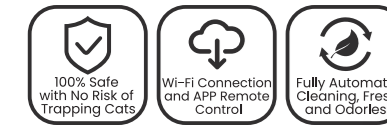
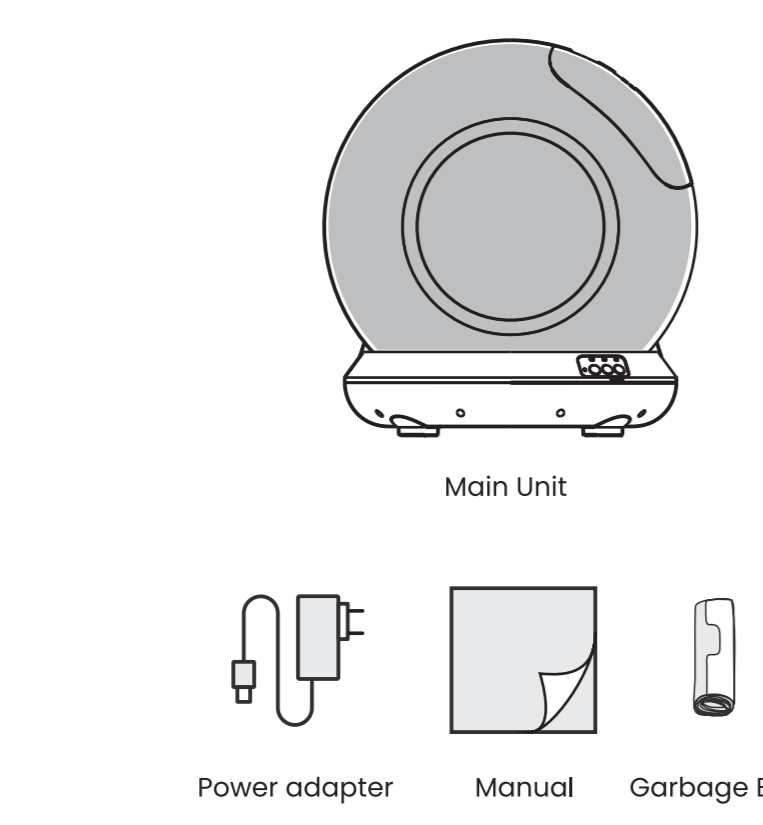


Table of Contents

- I. Product Packaging List ----- 01
- II. Product Introduction ----- 02
- III. Installation Instructions ----- 04
- IV. Product Usage Instructions (Binding App / Network Setup) ----- 06
- Product Usage Instructions (Sand Grooming/Sand Replacement) ----- 08
- V. Garbage Bag Change ----- 09
- VI. Cleaning and Maintenance ----- 10
- VII. Fault Indicator Light Explanation ----- 11
- VIII. Protection Function ----- 11
- IX. Working Mode Introduction ----- 12
- X. Precautions ----- 13
- XI. Basic Parameter Information ----- 14
- XII. Toxic and Harmful Substances ----- 14
- XIII. Safety Guidelines for Use ----- 15
- XIV. After-Sales Service Card ----- 16

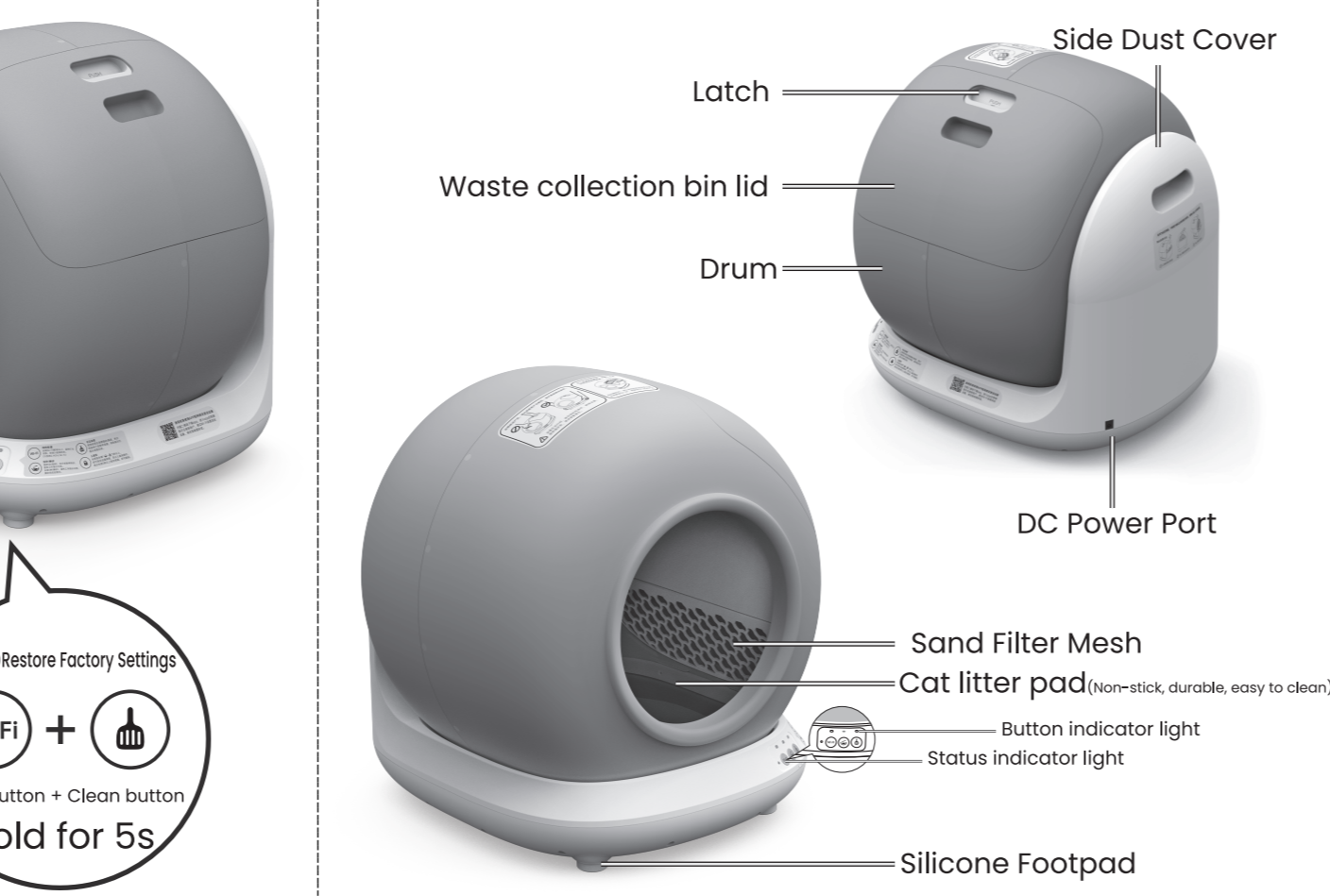
I. Product Packaging List



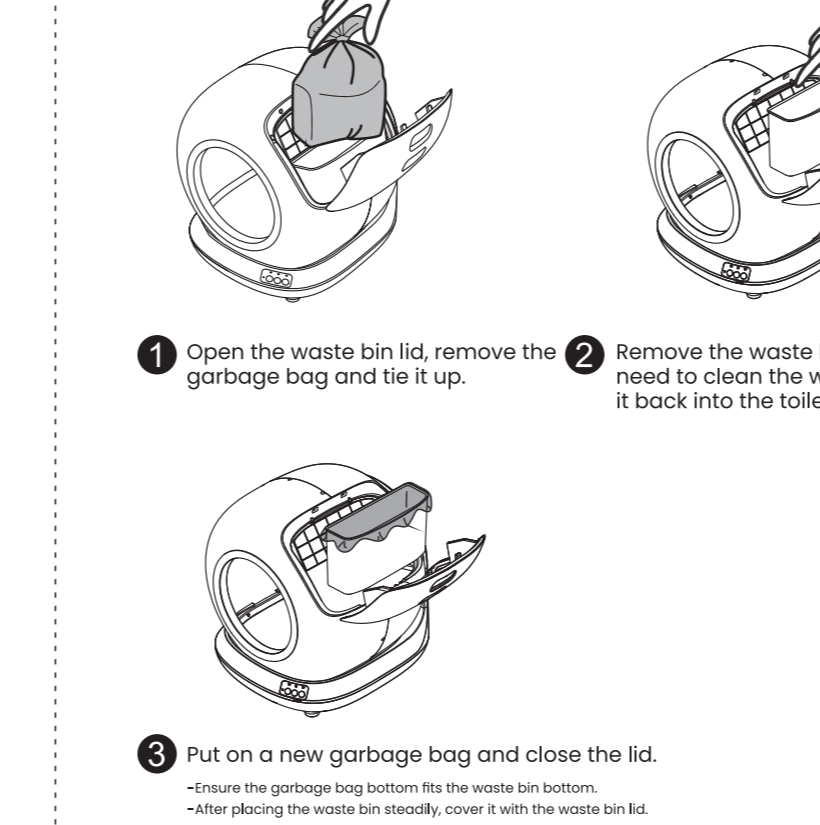
II. Product Introduction

Introduction to the Keypad Functions

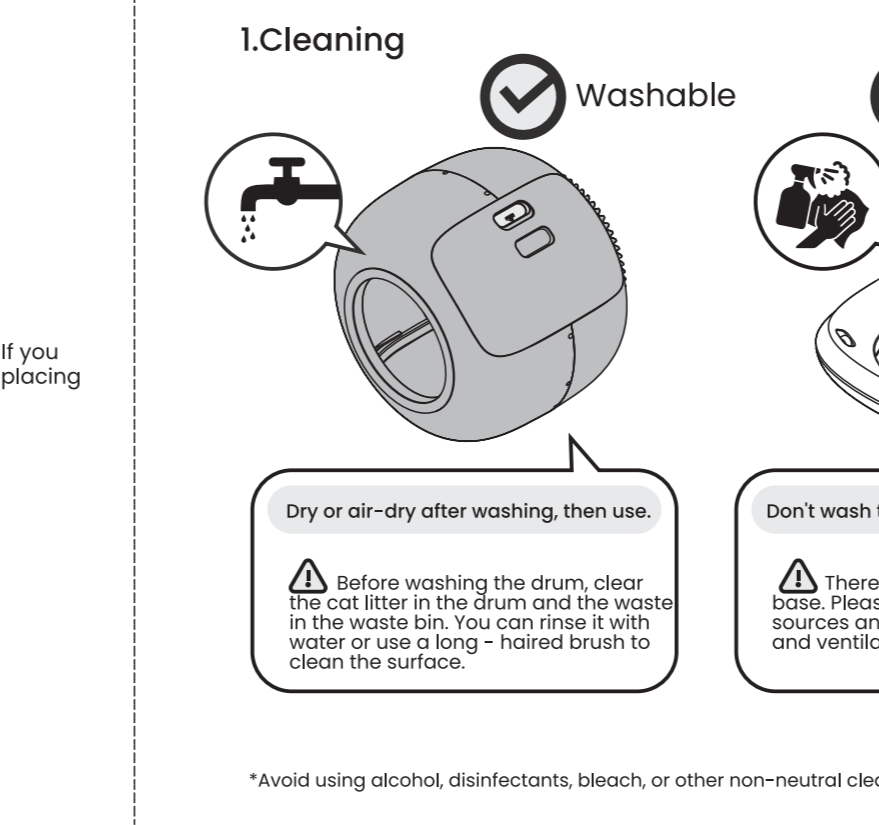
- Wi-Fi**
 - Hold Wi-Fi button for 3+ seconds, blue light flashes for setup mode, stays on for success. (2.4GHz Wi-Fi only)
- Sand Grooming/Sand Replacement**
 - Single short press (grooming): Start or pause polishing, blue light stays on during polishing, and turns off when done.
 - Hold 3s to change sand: blue light flashes during change, single click to pause/resume, light off when done.
- Manual cleaning/bag changing**
 - Single short press (cleaning): Start or pause cleaning, blue light on during cleaning, off when done.
 - Hold for 3s (bag change): blue light flashes during bag change, after 3 minutes, device enters standby and light turns off.
- Child Lock**
 - Long press combo key (Wi-Fi + Clean button) for over 3 seconds, the status indicator light (blue light) will stay on locking the device buttons to prevent accidental operation by children. Hold for another 3 seconds to unlock.



V. Garbage Bag Change



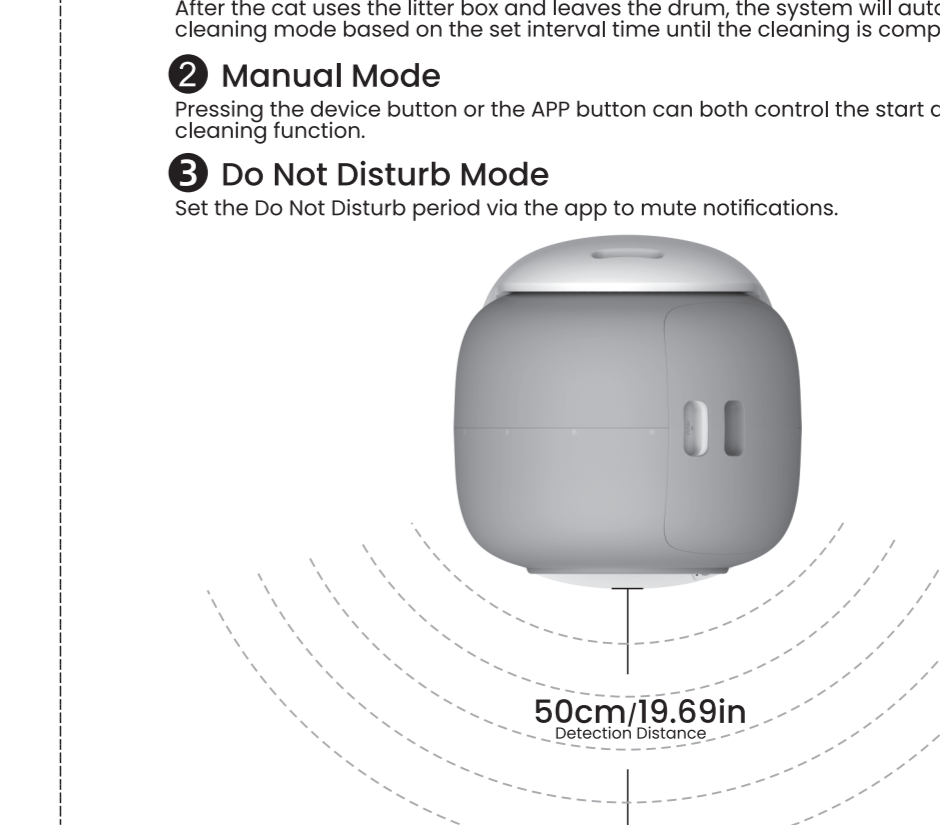
VI. Cleaning and Maintenance



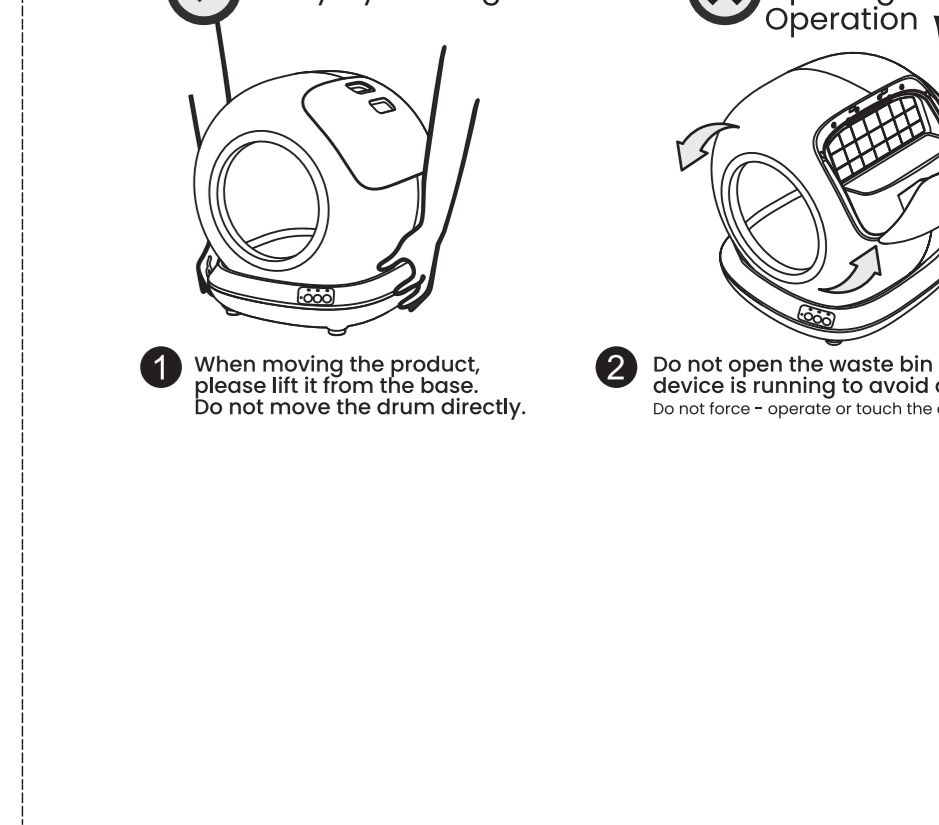
VII. Fault Indicator Light Explanation

○	1. When the device is powered on, the white light stays on in normal standby mode.
●	2. When child lock is on, blue light stays on.
●	3. When the device detects a cat or person approaching, the red light will flash continuously, regardless of whether it is in standby or child lock mode, until the pet leaves, at which point it will return to the current instruction prompt state.
●	4. When the device is interrupted due to pause, blockage, or other reasons during the current instruction for cleaning, sand replacement, or sand grooming, the red light stays on.

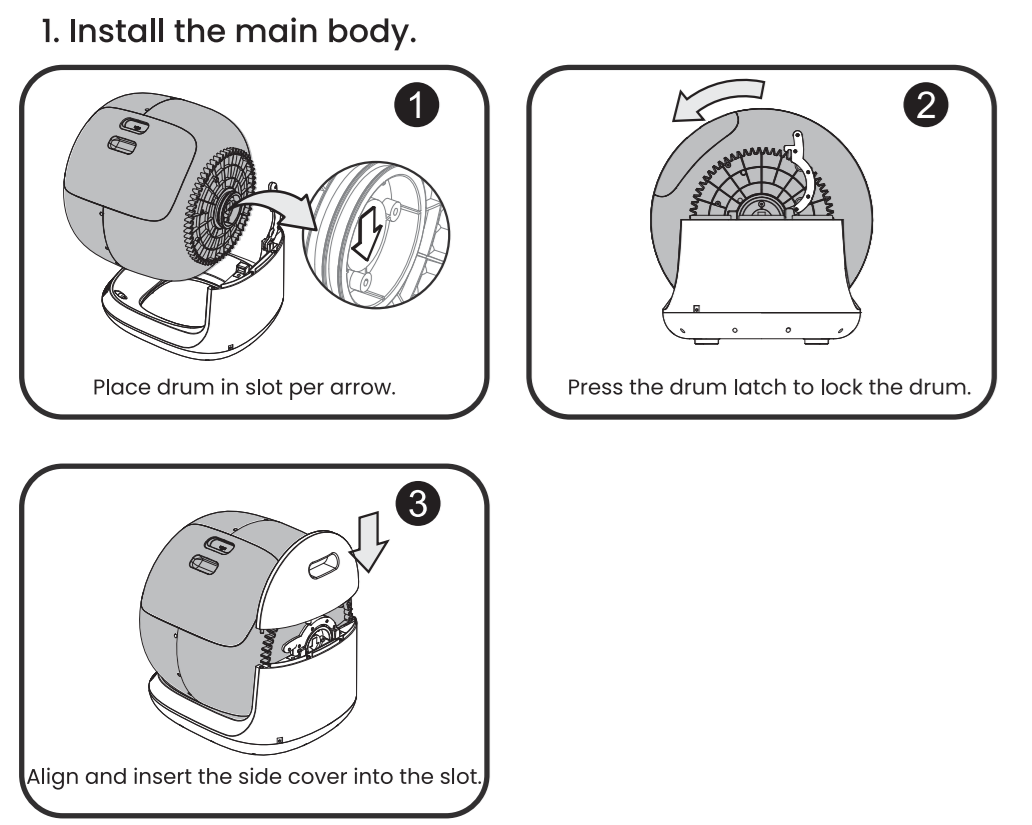
IX. Working Mode Introduction



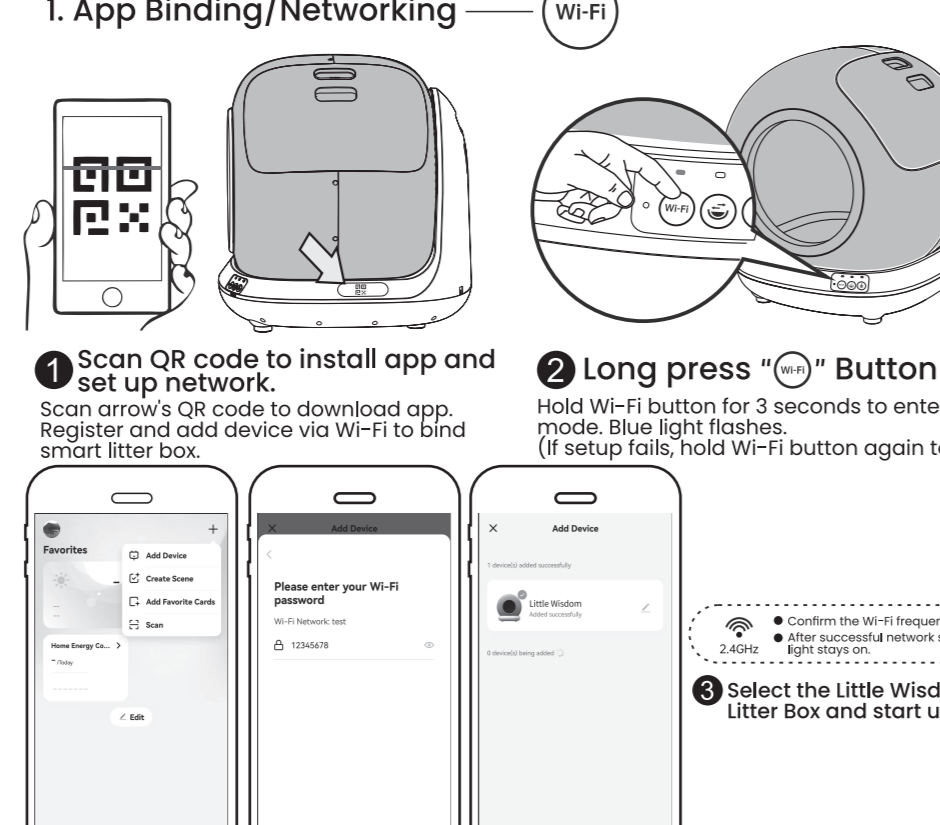
X. Precautions



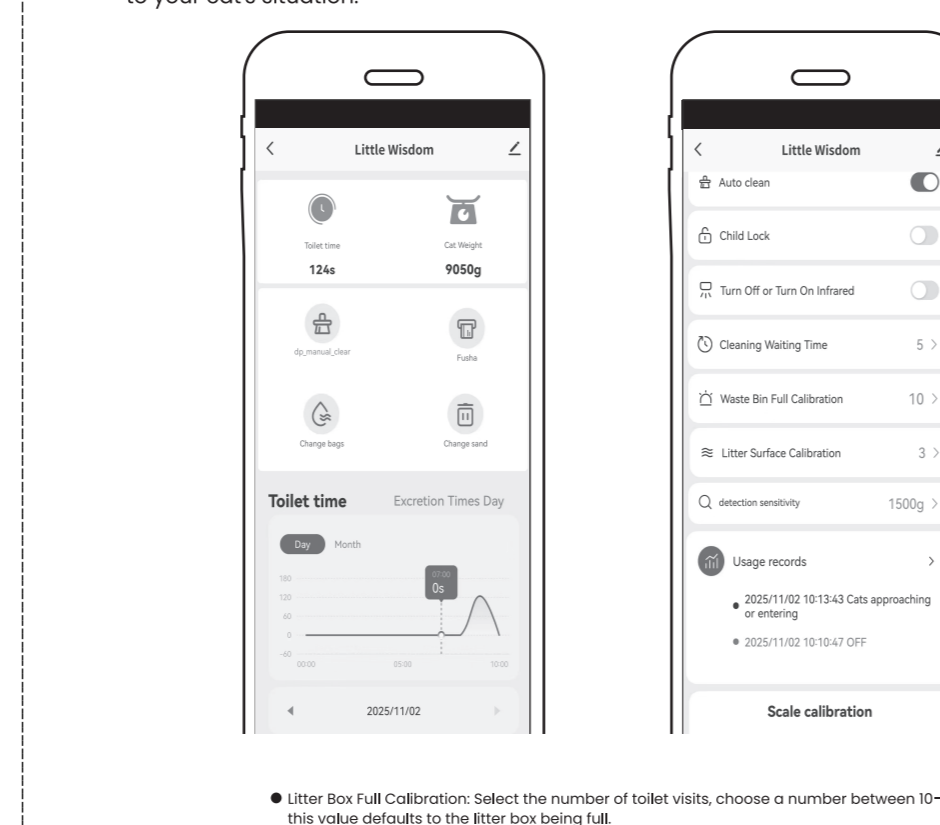
III. Installation Instructions



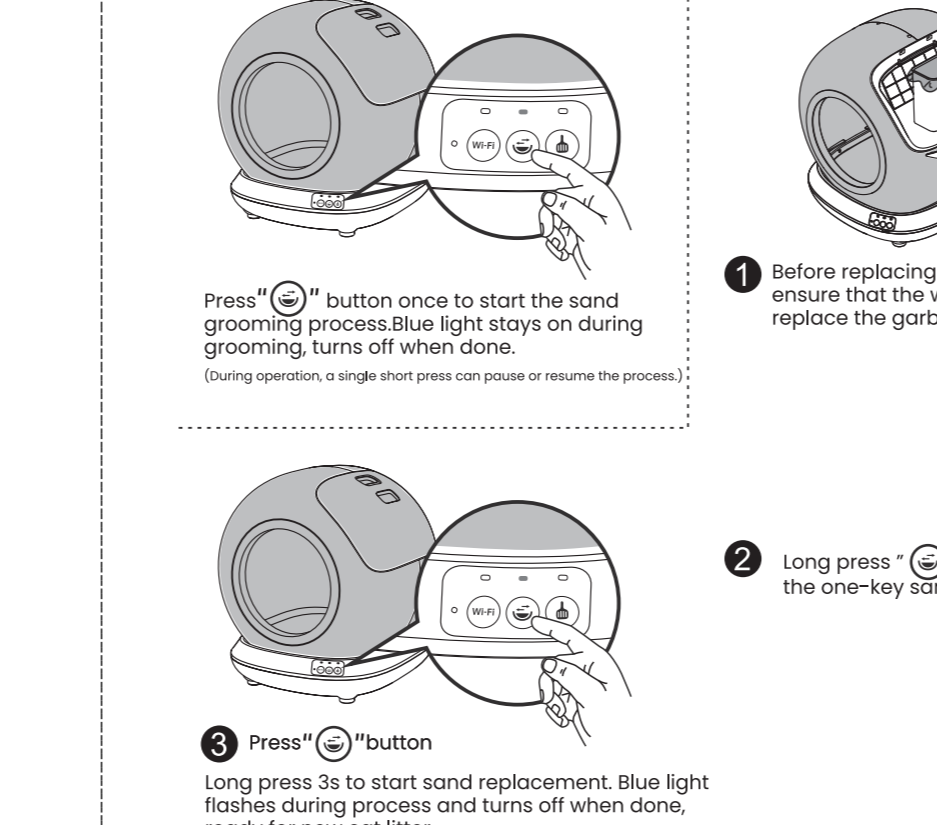
IV. Product Usage Instructions



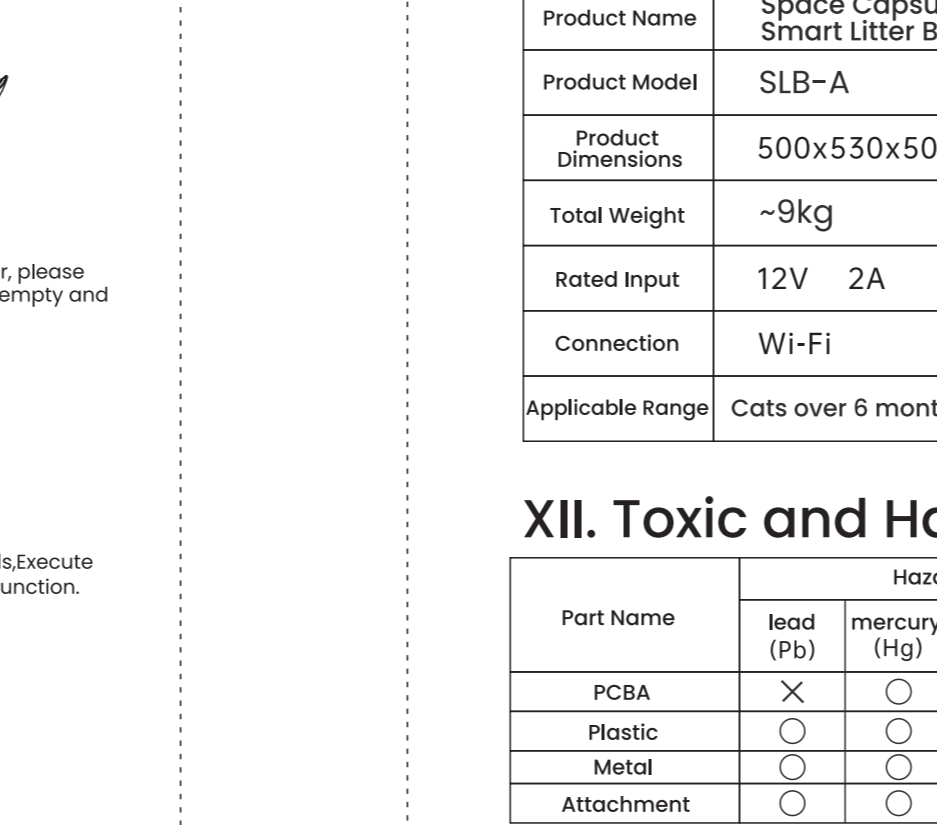
4 App Interface



2.Sand Grooming



3.Sand Replacement



XI. Basic Parameter Information

Product Name	Space Capsule Smart Litter Box
Product Model	SLB-A
Product Dimensions	500x530x508mm
Total Weight	~9kg
Rated Input	12V 2A
Connection	Wi-Fi
Applicable Range	Cats over 6 months old

XII. Toxic and Harmful Substances

Part Name	Hazardous substances or elements					
	lead (Pb)	mercury (Hg)	cadmium (Cd)	Cr(VI) (Cr6+)	PBBs (PBB)	PBDEs (PBDE)
PCBA	×	○	○	○	○	○
Plastic	○	○	○	○	○	○
Metal	○	○	○	○	○	○
Attachment	○	○	○	○	○	○

XIII. Safety Guidelines for Use

- "Non-compliance may cause product malfunction or other losses."
- Please strictly follow the instructions for installation and use of the equipment.
 - Do not use for kittens under 6 months old or cats weighing less than 1.5 kg.
 - Do not place the device in a high-temperature or high-humidity environment.
 - For indoor use only. Do not place in direct sunlight or near a heat source.
 - This product uses safe low-voltage power, but pets chewing on the power cord can still cause a leakage risk. Please secure and hide the power cord during use to prevent pets from chewing on it. If you notice your pet chewing on the cord, stop it immediately.
 - Use only the original adapter; otherwise, it may damage the device or create safety hazards.
 - Place on a flat, hard surface and avoid contact with walls.
 - Do not tilt the device to avoid safety hazards.
 - Do not immerse or soak the bottom of the device in water.
 - The bottom of this product contains a weight sensor. Please handle with care when moving it.
 - Unplug power cord when not in use or moving.
 - If children use this device, make sure they do so under adult supervision.
 - Have repairs done by a professional to avoid accidental injuries.
 - Don't place objects on or press the device top to ensure normal operation.
 - Before a long holiday, ensure the litter in the smart cat toilet is sufficient and the waste box has enough space.
 - If you encounter any product usage issues, please contact customer service promptly.

XIV. After-Sales Service Card

Warranty Terms

During the warranty period, non-human damage causing product performance failure is covered by the "Three Guarantees":

- Within 7 days of purchase, if the Little Wisdom product has quality issues, the consumer can choose a one-time refund of the original price or a replacement with the same model and specifications.
- Within 15 days of purchase, if the Little Wisdom product has quality issues, the consumer can choose to replace it with the same model and specifications.
- The warranty period for this product is one year.
- This certificate shall not be altered; otherwise, it will be deemed invalid.

Non-warranty Terms

The following situations (but not limited to) are not covered by the "Three Guarantees":

- No "Three Guarantees" certificate, missing valid invoice, or exceeding the "Three Guarantees" service validity period.
- Damage caused by failure to use, maintain, and store according to the user manual.
- Damage caused by force majeure such as fire, lightning strike, flood, etc.
- The product model or serial number on the warranty card does not match the actual product.
- Damage caused by disassembly or repair by non-authorized service providers.
- Normal fading, wear, and consumption during product use are not considered warranty-covered faults.

Maintenance Record

Repair Center Name: _____ Repair Fault Condition: _____

Repair Center Phone: _____ Refund/Return Proof: _____

Repair Date: _____ Technician's Signature: _____

Fault Cause: _____ Repair Center Stamp: _____

FCC Warning

This device complies with Part 15 of the FCC Rules. Operation is subject to the following two conditions: (1) This device may not cause harmful interference, and (2) this device must accept any interference received, including interference that may cause undesired operation.

NOTE 1: This equipment has been tested and found to comply with the limits for a Class B digital device, pursuant to part 15 of the FCC Rules. These limits are designed to provide reasonable protection against harmful interference in a residential installation. This equipment generates, uses and can radiate radio frequency energy and, if not installed and used in accordance with the instructions, may cause harmful interference to radio communications. However, there is no guarantee that interference will not occur in a particular installation. If this equipment does cause harmful interference to radio or television reception, which can be determined by turning the equipment off and on, the user is encouraged to try to correct the interference by one or more of the following measures:

- Reorient or relocate the receiving antenna.
- Increase the separation between the equipment and receiver.
- Connect the equipment into an outlet on a circuit different from that to which the receiver is connected.
- Consult the dealer or an experienced radio/TV technician for help.

NOTE 2: Any changes or modifications to this unit not expressly approved by the party responsible for compliance could void the user's authority to operate the equipment.

RF Exposure Statement

To maintain compliance with FCC's RF Exposure guidelines, this equipment should be installed and operated with minimum 20cm between the radiator and your body. This device and its antenna(s) must not be co-located or operated in conjunction with any other antenna or transmitter.

NOTICE TO USERS

-Thank you for choosing the Space Capsule Smart Cat Litter Box. We'll keep working to bring you great products.

-Please read the product manual carefully before use. Installation or use indicates acceptance of the safety guidelines.

-Any accidents or losses due to improper operation will not be our responsibility, and we assume no legal liability.

-The rights to interpret and amend this statement belongs to our company.